

LEGEND

- 0225 GAS PIPELINE
- 0160 GAS PIPELINE
- 0110 GAS PIPELINE
- 063 GAS PIPELINE
- 032 GAS PIPELINE
- BEZEQ
- STREET LIGHT
- HOT
- ELECTRICAL LINE
- DRAINAGE
- WATER LINE
- SEWAGE
- CELLCOM
- PARTNER
- BALL VALVE

DAR-BVM-110-007

PLACEMENTS OF SYSTEMS IN CONNECTION CABINETS

NUMBER OF PLOT, TYPE OF PLOT

PLAN BOUNDARY

EXISTING LINES

SEWAGE

IRRIGATION LINE

MEKOROT

Distance to the building border from right
Number of Road

Distance to the building border from left
Road width

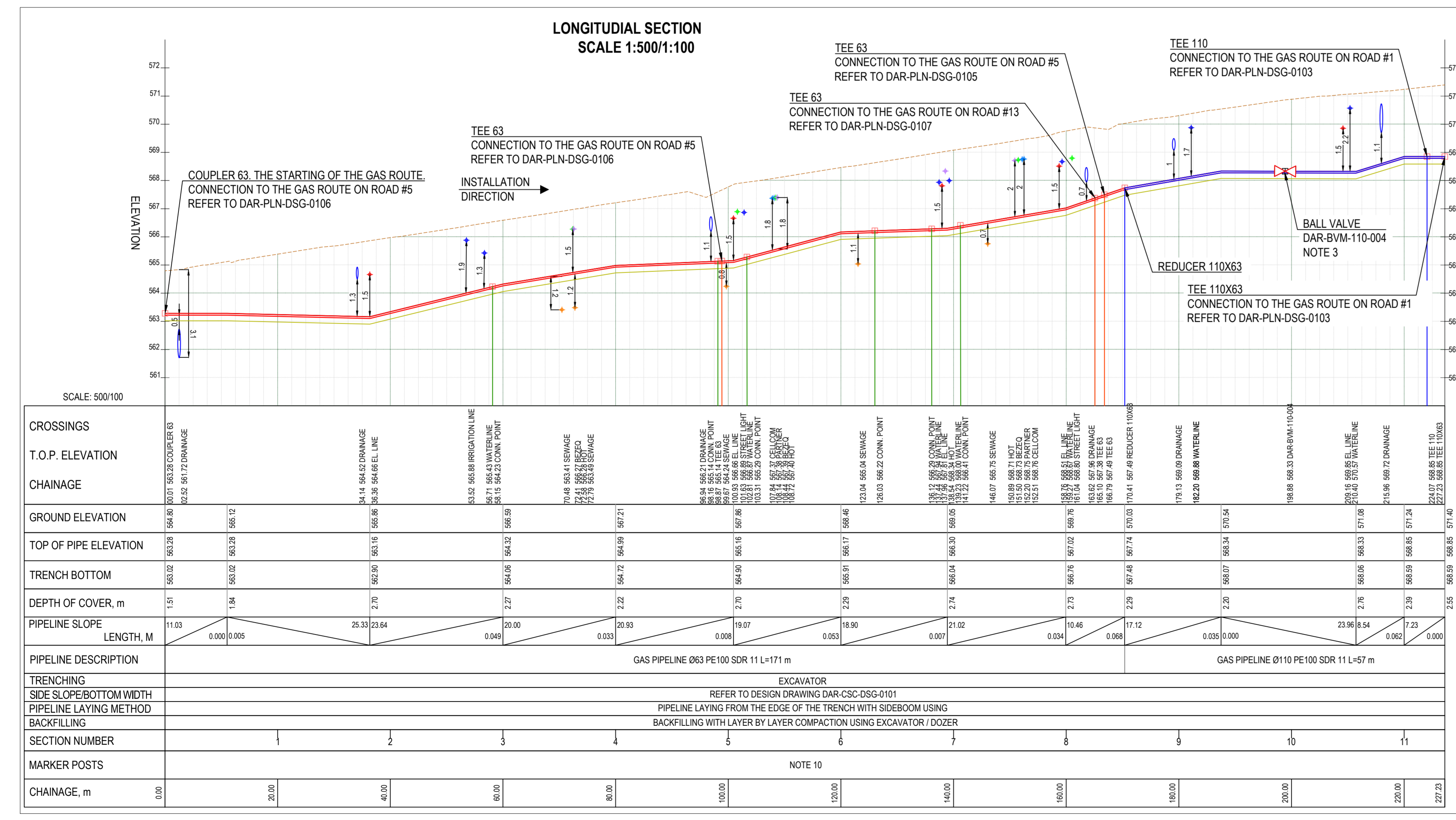
BORDER OF THE CONSTRUCTION PHASE I

NOTES

- ALL DIMENSIONS ARE IN M UNLESS OTHERWISE STATED
- ALL PIPES AND FITTINGS RELATED TO THIS DRAWING ARE FROM PE100 MATERIAL
- GATE VALVES, ALSO AS BALL VALVES, SHOULD BE INSTALLED IN CONJUNCTION WITH EXTENDED SPINDLES AND SURFACE BOXES. VALVES CONNECTION TO MAINLINE SHOULD BE DONE USING COUPLERS.
- PIPELINE MINIMUM ELASTIC BAND RADIUS SHOULD NOT BE LESS THAN 25D
- ACTUAL LOCATIONS AND DEPTHS OF THE UNDERGROUND UTILITIES SHOWN ON THE DRAWING (SEWAGE, DRAINAGE, IRRIGATION AND LIGHTING LINES, ETC.) ARE ESTIMATED VALUES ONLY.
- CONTRACTOR IS RESPONSIBLE FOR DETECTING AND LOCATING ALL UNDERGROUND OBSTACLES WHETHER SHOWN ON THE DRAWINGS OR NOT
- ALL CROSSINGS WORKS SHOULD BE DONE WITH THE PRESENCE OF THE CROSSED LINE OWNER/OPERATOR REPRESENTATIVES.
- THE CONTRACTOR IS RESPONSIBLE FOR THE EXAMINATION OF THE DIMENSIONS AND THEIR VERIFICATION AT THE SITE. THE CONTRACTOR SHALL CHECK ALL THE DIMENSIONS AND IN THE EVENT OF AN ERROR OR INCONSISTENCY, SHALL INFORM THE SUPERVISOR.
- THE CONTRACTOR IS RESPONSIBLE FOR DESIGNING, APPROVING AND PERFORMING OF TEMPORARY SUPPORTS DURING CONSTRUCTION FOR ALL ADJACENT OR CROSSING OTHER INFRASTRUCTURES.
- MARKER POSTS / WARNING SIGNS WILL BE INSTALLED AT THE END OF EACH SERVICE LINE CONNECTION
- CONNECTION LINE TIE-INS SHOULD BE DONE USING TAPPING SADDLE DETAIL. THE POSITION OF THE SERVICE LINE CONNECTIONS AND THEIR DIAMETER ARE SHOWN IN THE COORDINATES TABLE IN THE CURRENT DRAWING

REFERENCES

NATURAL GAS DISTRIBUTION SYSTEM	SI 5664 PART 3
GENERAL CONSTRUCTION STANDARDS	GGG-STD-CSE-0001
TYPICAL SCHEMES OF LAYING THE GAS PIPELINE IN THE TRENCH	DAR-CSC-DSG-0101
TYPICAL ROAD CROSS SECTION	DAR-CSC-CIV-0101 DAR-CSC-CIV-0102



SPECIFICATION OF MATERIALS AND PRODUCTS, BUILDING GAS PIPELINE ON THE ROADS

ITEM	DESCRIPTION	QUANTITY [M] OR [PIECES] ON ROAD	5% OF THE LENGTH OF THE PIPELINE (AT RESERVE)	OVERALL QUANTITY [M] OR [PIECES]
1	PIPE DN 110, PE100	57	3	60
2	PIPE DN 63, PE100	171	9	180
3	MARKER TAPE "GAS"	228	11	239
4	TRACER WIRE	228	11	239
5	BALL VALVE DN 110			1
6	REDUCER DN 110X63, PE100			1
7	TEE DN 110X63, PE100			1
8	TEE DN 110, PE100			1
9	TEE DN 63, PE100			3
10	COUPLER DN 63, PE100			1

SPECIFICATION OF MATERIALS AND PRODUCTS, GAS PIPELINE CONNECTIONS TO THE LANDOWNERS

ITEM	DESCRIPTION	QUANTITY [M] OR [PIECES] ON ROAD	5% OF THE LENGTH OF THE PIPELINE (AT RESERVE), MIN=2M	OVERALL QUANTITY [M] OR [PIECES]
1	PIPE DN 32, PE100	48	12	60
2	MARKER TAPE "GAS"	48	12	60
3	TRACER WIRE	48	12	60
4	TAPPING SADDLE DN 63/32, PE100			6
5	PREFORMED BEND 90°, DN 32			6
6	PROTECTIVE SLEEVE DN 32			6
7	GAS STOP (4901D/4901Z) DN 32			6

*SOME POSITIONS ARE IN LARGE NUMBERS BECAUSE THE CONSTRUCTION PHASE OF NEW GAS ROUTES IS NOT DEFINED.

COORDINATES TABLE

№	EASTING	NORTHING	POINT EL.	DETAIL / DIA	NOTES
CONNECTION POINTS COORDINATES					
1	218515.86	573450.11	566.41	TAPPING SADDLE / 63/32	SERVICE LINE
2	218512.59	573446.19	566.29	TAPPING SADDLE / 63/32	SERVICE LINE
3	218506.13	573438.45	566.22	TAPPING SADDLE / 63/32	SERVICE LINE
4	218491.57	573421.01	565.29	TAPPING SADDLE / 63/32	SERVICE LINE
5	218488.27	573417.05	565.14	TAPPING SADDLE / 63/32	SERVICE LINE
6	218462.64	573386.34	564.23	TAPPING SADDLE / 63/32	SERVICE LINE
PIPELINE DETAILS COORDINATES					
7	218429.50	573343.20	564.80	COUPLER / 63	MAINLINE
8	218488.72	573417.59	565.14	TEE / 63X63X63	MAINLINE
9	218530.77	573488.77	567.38	TEE / 63X63X63	MAINLINE
10	218531.82	573470.09	567.49	TEE / 63X63X63	MAINLINE
11	218534.09	573472.91	567.49	REDUCER / 110X63	MAINLINE
12	218551.71	573494.96	568.33	BALL VALVE / 110	DAR-BVM-110-004 MAINLINE
13	218567.51	573514.58	568.85	TEE / 110X110X110	MAINLINE
14	218569.50	573517.03	568.85	TEE / 110X110X63	MAINLINE

REFERENCES

NATURAL GAS DISTRIBUTION SYSTEM	SI 5664 PART 3
GENERAL CONSTRUCTION STANDARDS	GGG-STD-CSE-0001
TYPICAL SCHEMES OF LAYING THE GAS PIPELINE IN THE TRENCH	DAR-CSC-DSG-0101
TYPICAL ROAD CROSS SECTION	DAR-CSC-CIV-0101 DAR-CSC-CIV-0102

Rev.	Date	Description	Revision	BY	CHK	APPD
-	-	-	-	-	-	-
-	-	-	-	-	-	-
-	-	-	-	-	-	-
-	-	-	-	-	-	-

Design Company: **BIM LEADERS LTD.**
Rozhansky 18 Rishon Letsiyon

Client Company: **NEGEV NATURAL GAS**
7 Masada St. Besser Building 4 Bnei Brak, POB 47, 5126112
Tel: 03-5228508 Fax: 03-5662521 Email: office@neveggas.co.il

Title: **NATURAL GAS DISTRIBUTION NETWORK**
ROVA 12 ARAD
Plan & Longitudinal section - Gas Route on Road#5

Region/Area: **ROVA 12 ARAD**

Proj. №: -

Drawing №: **DAR-PLN-DSG-0104** Rev.: **P0**

Scale: 1:500 Date: 22.06.2021

Design Company Approvals			Client Company Approvals		
Designed	Checked	Approved	Approved	Approved	Approved
A. Bukatchuk	O. Safaniuk	T. Gotsulenko	K. Sigran	Y. Leyziel	Y. Leyziel

Sign: [Signatures]

Date: 22.06.2021 22.06.2021 22.06.2021 22.06.2021 22.06.2021 22.06.2021