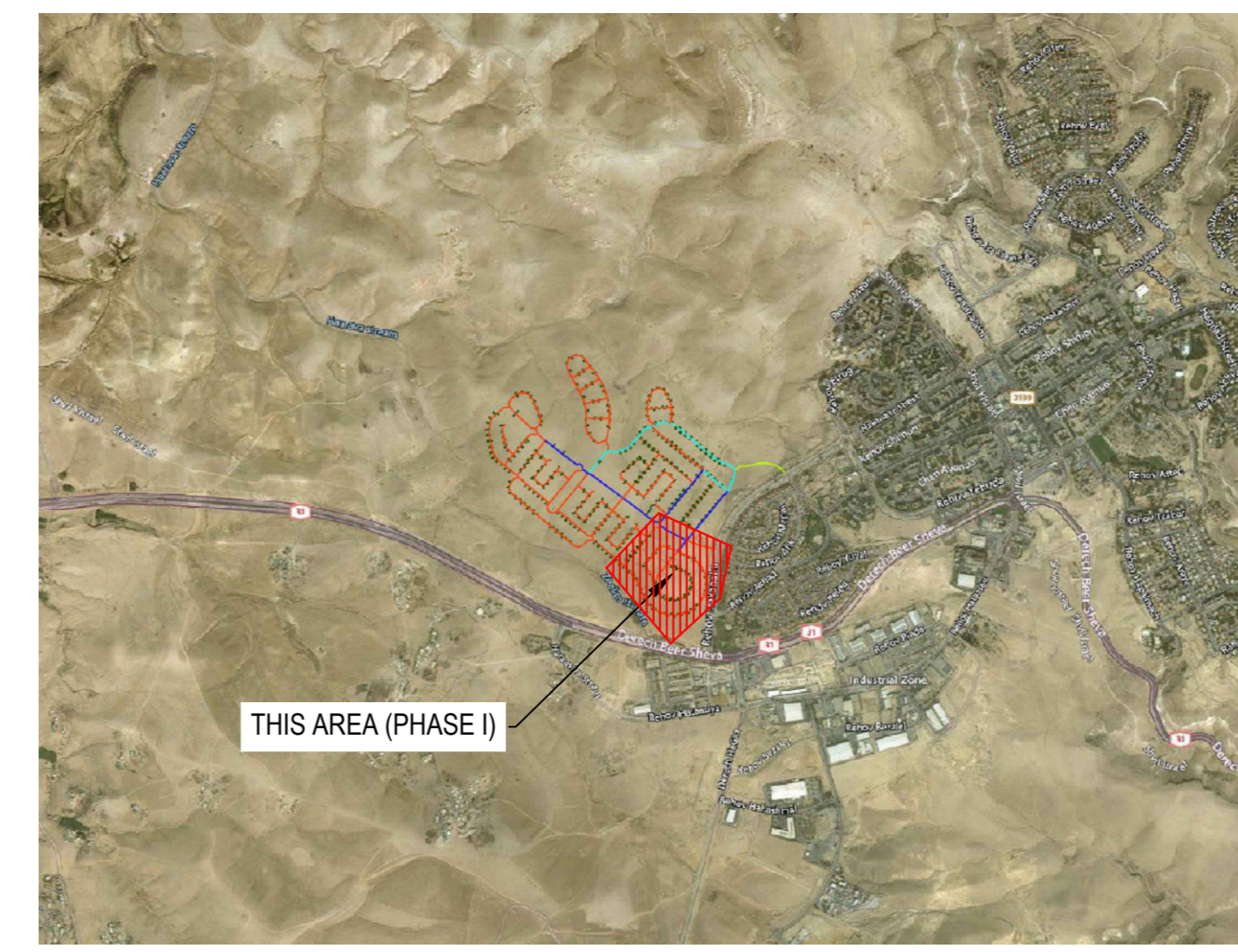
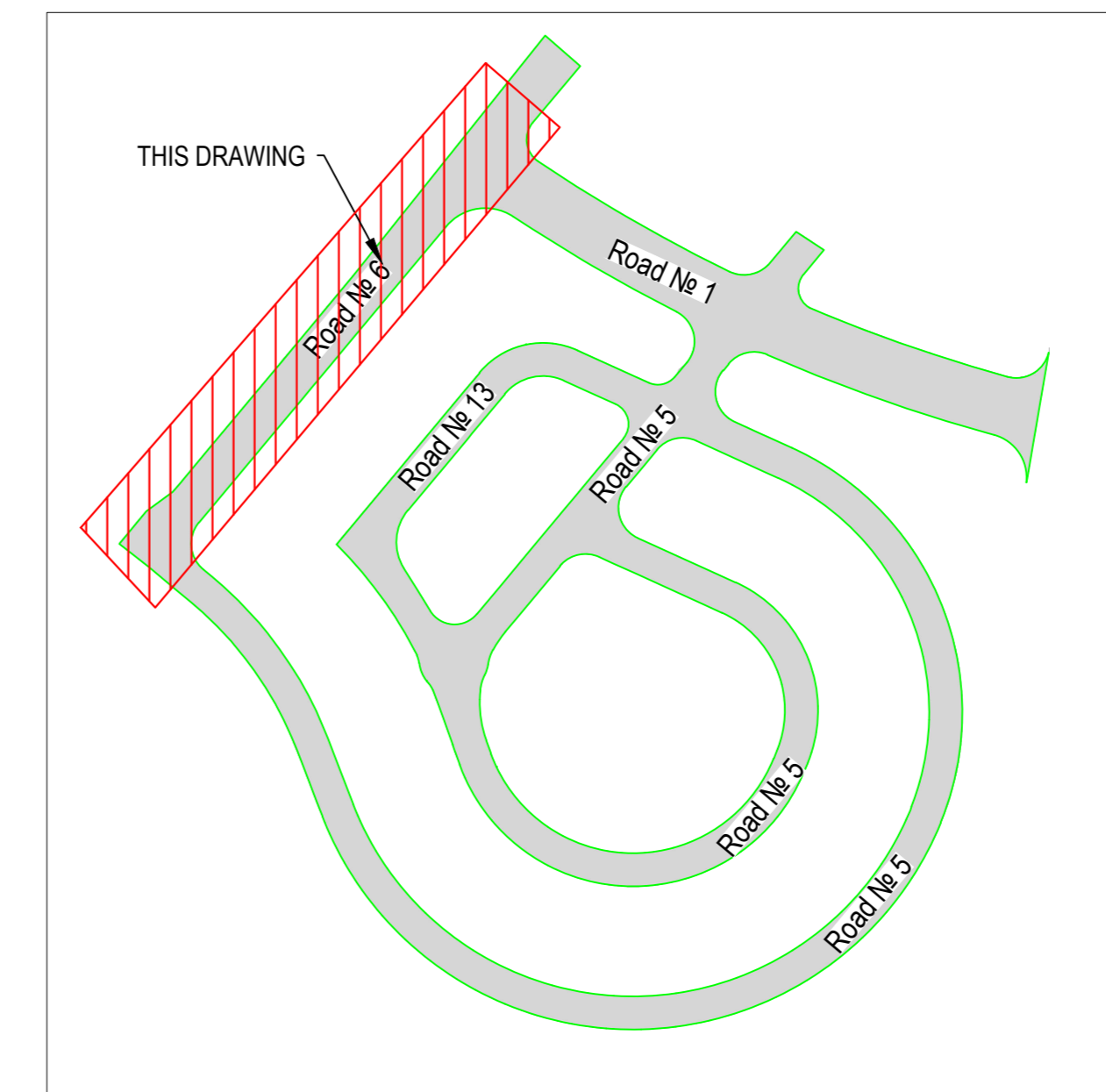


DISTRICT LOCATION MAP



SITUATIONAL PLAN



LEGEND

- 0225 GAS PIPELINE
- 0160 GAS PIPELINE
- 0110 GAS PIPELINE
- 063 GAS PIPELINE
- 032 GAS PIPELINE
- BEZEO
- STREET LIGHT
- HOT ELECTRICAL LINE
- DRAINAGE
- WATER LINE
- SEWAGE
- CELLCOM PARTNER
- BALL VALVE

DAR-BVM-110-007

PLACEMENTS OF SYSTEMS IN CONNECTION CABINETS

NUMBER OF PLOT, TYPE OF PLOT

PLAN BOUNDARY

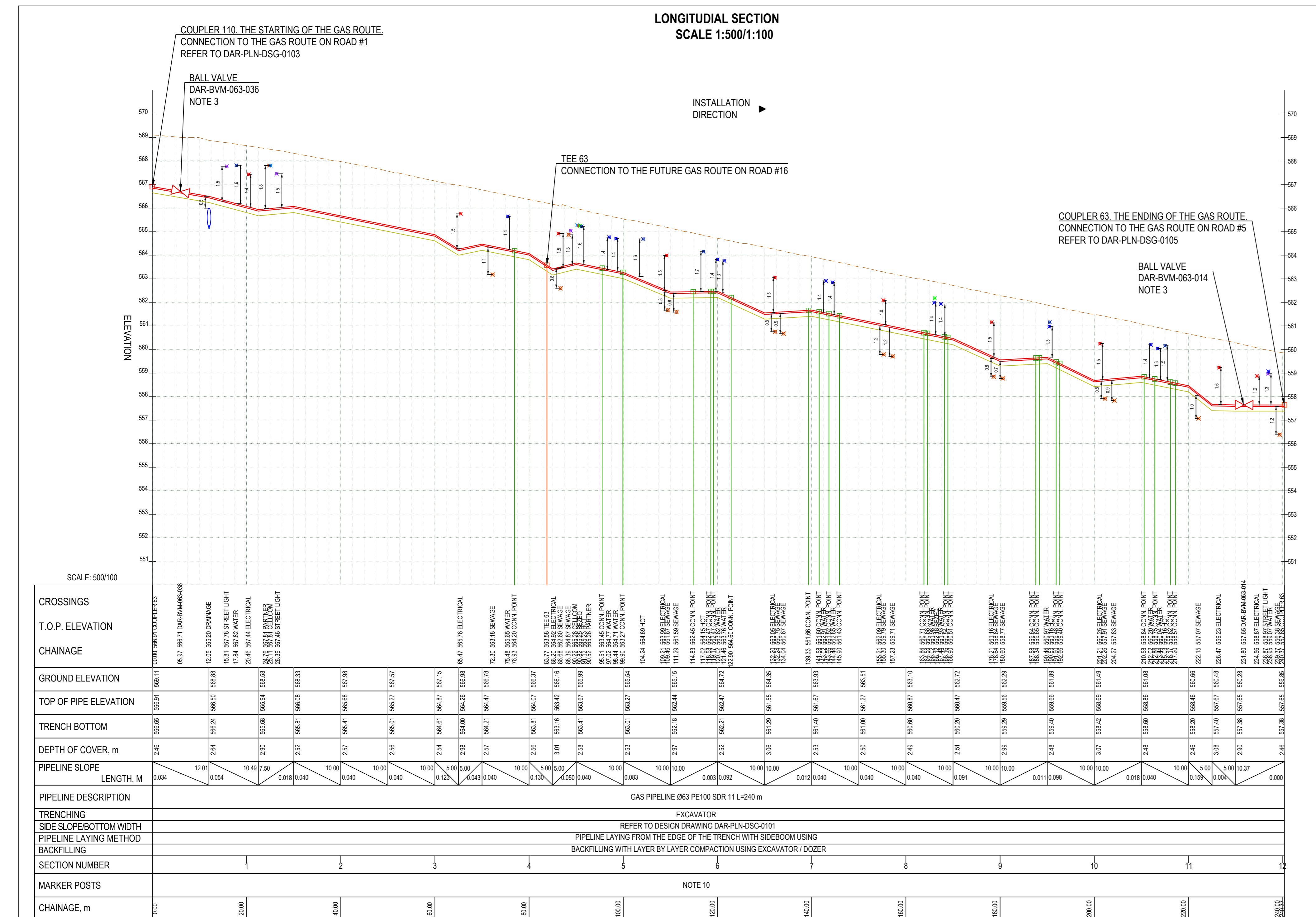
EXISTING LINES

SEWAGE IRRIGATION LINE MEKOROT

Distance to the building border from right Number of Road

Distance to the building border from left Road width

BORDER OF THE CONSTRUCTION PHASE I



SPECIFICATION OF MATERIALS AND PRODUCTS. BUILDING GAS PIPELINE ON THE ROADS

ITEM	DESCRIPTION	QUANTITY [M] OR [PIECES] ON ROAD	5% OF THE LENGTH OF THE PIPELINE (AT RESERVE)	OVERALL QUANTITY [M] OR [PIECES]
1	PIPE DN 63, PE100	240	12	252
2	MARKER TAPE "GAS"	240	12	252
3	TRACER WIRE	240	12	252
4	BALL VALVE DN 63, PE100			2
5	TEE DN 63, PE100			1
6	COUPLER DN 63, PE100			6

SPECIFICATION OF MATERIALS AND PRODUCTS. GAS PIPELINE CONNECTIONS TO THE LANDOWNERS

ITEM	DESCRIPTION	QUANTITY [M] OR [PIECES] ON ROAD	5% OF THE LENGTH OF THE PIPELINE (AT RESERVE, MIN=2M)	OVERALL QUANTITY [M] OR [PIECES]
1	PIPE DN 32, PE100	208	46	254
2	MARKER TAPE "GAS"	208	46	254
3	TRACER WIRE	208	46	254
4	TAPPING SADDLE DN 63/32, PE100			23
5	PREFORMED BEND 90°, DN 32			23
6	PROTECTIVE SLEEVE DN 32			23
7	GAS STOP (4901D49012) DN 32			23

*SOME POSITIONS ARE IN LARGE NUMBERS BECAUSE THE CONSTRUCTION PHASE OF NEW GAS ROUTES IS NOT DEFINED.

COORDINATES TABLE

Nr	EASTING	NORTHING	POINT EL.	DETAIL / DIA	NOTES
COORDINATES OF THE SERVICE LINES					
1	218405.729	573533.913	564.20	TAPPING SADDLE / 63/32	SERVICE LINE
2	218394.053	573519.460	563.45	TAPPING SADDLE / 63/32	SERVICE LINE
3	218391.295	573516.046	563.27	TAPPING SADDLE / 63/32	SERVICE LINE
4	218391.688	573504.610	562.45	TAPPING SADDLE / 63/32	SERVICE LINE
5	218379.287	573501.738	562.47	TAPPING SADDLE / 63/32	SERVICE LINE
6	218378.908	573501.262	562.47	TAPPING SADDLE / 63/32	SERVICE LINE
7	218376.501	573498.435	564.60	TAPPING SADDLE / 63/32	SERVICE LINE
8	218366.090	573465.725	561.66	TAPPING SADDLE / 63/32	SERVICE LINE
9	218364.668	573463.962	561.60	TAPPING SADDLE / 63/32	SERVICE LINE
10	218363.344	573462.378	561.52	TAPPING SADDLE / 63/32	SERVICE LINE
11	218361.918	573460.649	561.43	TAPPING SADDLE / 63/32	SERVICE LINE
12	218350.468	573466.272	560.71	TAPPING SADDLE / 63/32	SERVICE LINE
13	218347.993	573466.272	560.68	TAPPING SADDLE / 63/32	SERVICE LINE
14	218347.700	573463.523	560.54	TAPPING SADDLE / 63/32	SERVICE LINE
15	218347.228	573462.952	560.51	TAPPING SADDLE / 63/32	SERVICE LINE
16	218335.339	573448.545	559.64	TAPPING SADDLE / 63/32	SERVICE LINE
17	218334.855	573447.962	559.65	TAPPING SADDLE / 63/32	SERVICE LINE
18	218332.595	573445.206	559.48	TAPPING SADDLE / 63/32	SERVICE LINE
19	218332.119	573444.615	559.40	TAPPING SADDLE / 63/32	SERVICE LINE
20	218320.681	573430.819	558.84	TAPPING SADDLE / 63/32	SERVICE LINE
21	218319.250	573429.068	558.75	TAPPING SADDLE / 63/32	SERVICE LINE
22	218317.124	573426.514	558.62	TAPPING SADDLE / 63/32	SERVICE LINE
23	218316.465	573425.715	558.57	TAPPING SADDLE / 63/32	SERVICE LINE
PIPELINE DETAILS COORDINATES TABLE					
24	218459.777	573578.140	566.91	COUPLER 63	MAINLINE
25	218301.320	573408.180	557.65	COUPLER 63	MAINLINE
26	218401.429	573528.590	563.58	TEE / 63X63X63	MAINLINE
27	218456.485	573573.163	566.71	BALL VALVE / 63	MAINLINE DAR-BVM-063-036
28	218306.927	573414.661	557.65	BALL VALVE / 63	MAINLINE DAR-BVM-063-014

- ### NOTES
- ALL DIMENSIONS ARE IN M UNLESS OTHERWISE STATED
 - ALL PIPES AND FITTINGS RELATED TO THIS DRAWING ARE FROM PE100 MATERIAL
 - GATE VALVES, ALSO AS BALL VALVES, SHOULD BE INSTALLED IN CONJUNCTION WITH EXTENDED SPINDLES AND SURFACE BOXES. VALVES CONNECTION TO MAINLINE SHOULD BE DONE USING COUPLERS
 - PIPELINE MINIMUM ELASTIC BAND RADIUS SHOULD NOT BE LESS THAN 25D
 - ACTUAL LOCATIONS AND DEPTHS OF THE UNDERGROUND UTILITIES SHOWN ON THE DRAWING (SEWAGE, DRAINAGE, IRRIGATION AND LIGHTING LINES, ETC.) ARE ESTIMATED VALUES ONLY
 - CONTRACTOR IS RESPONSIBLE FOR DETECTING AND LOCATING ALL UNDERGROUND OBSTACLES WHETHER SHOWN ON THE DRAWINGS OR NOT
 - ALL CROSSINGS WORKS SHOULD BE DONE WITH THE PRESENCE OF THE CROSSED LINE OWNER/OPERATOR REPRESENTATIVES
 - THE CONTRACTOR IS RESPONSIBLE FOR THE EXAMINATION OF THE DIMENSIONS AND THEIR VERIFICATION AT THE SITE. THE CONTRACTOR SHALL CHECK ALL THE DIMENSIONS AND IN THE EVENT OF AN ERROR OR INCONSISTENCY, SHALL INFORM THE SUPERVISOR
 - THE CONTRACTOR IS RESPONSIBLE FOR DESIGNING, APPROVING AND PERFORMING OF TEMPORARY SUPPORTS DURING CONSTRUCTION FOR ALL ADJACENT OR CROSSING OTHER INFRASTRUCTURES
 - MARKER POSTS / WARNING SIGNS WILL BE INSTALLED AT THE END OF EACH SERVICE LINE CONNECTION
 - CONNECTION LINE TIE-INS SHOULD BE DONE USING TAPPING SADDLE DETAIL. THE POSITION OF THE SERVICE LINE CONNECTIONS AND THEIR DIAMETER ARE SHOWN IN THE COORDINATES TABLE IN THE CURRENT DRAWING

REFERENCES

NATURAL GAS DISTRIBUTION SYSTEM	SI 5664 PART 3
GENERAL CONSTRUCTION STANDARDS	GGG-STD-CSE-0001
TYPICAL SCHEMES OF LAYING THE GAS PIPELINE IN THE TRENCH	DAR-CSC-DSG-0101
TYPICAL ROAD CROSS SECTION	DAR-CSC-CIV-0101 DAR-CSC-CIV-0102

Rev.	Date	Description	Revision	BY	CHK	APPD
-	-	-	-	-	-	-
-	-	-	-	-	-	-
-	-	-	-	-	-	-
-	-	-	-	-	-	-

Design Company: **BIM LEADERS LTD.**
St. Nofar 32 Yavne 8120732 Israel

Client Company: **NEGEV NATURAL GAS**
7 Masada St. Be'er Sheva Building 4 Be'er Sheva P.O. Box 47, 5126112
Tel: 03-5228508 Fax: 03-5662521 Email: office@negevgas.co.il

NATURAL GAS DISTRIBUTION NETWORK ROVA 12 ARAD

Plan & Longitudinal section - Gas Route on Road#6

Region/Area: ROVA 12 ARAD

Proj. No: -

Drawing No: DAR-PLN-DSG-0102

Scale: 1:500

Date: 23.06.2021

Design Company Approvals			Client Company Approvals		
Designed	Checked	Approved	Approved	Approved	Approved
A. Bukatchuk	O. Safanuk	T. Gotsulenko	K. Sigron	Y. Loyal	

Name: A. Bukatchuk O. Safanuk T. Gotsulenko K. Sigron Y. Loyal

Sign: [Signatures]

Date: 23.06.2021 23.06.2021 23.06.2021 23.06.2021 23.06.2021