

### LEGEND

- 0225 GAS PIPELINE
- 0160 GAS PIPELINE
- 0110 GAS PIPELINE
- 063 GAS PIPELINE
- 032 GAS PIPELINE
- BEZEQ
- STREET LIGHT
- HOT
- ELECTRICAL LINE
- DRAINAGE
- WATER LINE
- SEWAGE
- CELLCOM
- PARTNER
- BALL VALVE

DAR-BVM-110-007  
PLACEMENTS OF SYSTEMS IN CONNECTION CABINETS

204  
NUMBER OF PLOT, TYPE OF PLOT

PLAN BOUNDARY

EXISTING LINES

SEWAGE

IRRIGATION LINE

MEKOROT

Distance to the building border from right  
Number of Road

Distance to the building border from left  
Road width

BORDER OF THE CONSTRUCTION PHASE I

- ### NOTES
- ALL DIMENSIONS ARE IN M UNLESS OTHERWISE STATED
  - ALL PIPES AND FITTINGS RELATED TO THIS DRAWING ARE FROM PE100 MATERIAL
  - GATE VALVES, ALSO AS BALL VALVES, SHOULD BE INSTALLED IN CONJUNCTION WITH EXTENDED SPINDLES AND SURFACE BOXES. VALVES CONNECTION TO MAINLINE SHOULD BE DONE USING COUPLERS.
  - PIPELINE MINIMUM ELASTIC BAND RADIUS SHOULD NOT BE LESS THAN 25D
  - ACTUAL LOCATIONS AND DEPTHS OF THE UNDERGROUND UTILITIES SHOWN ON THE DRAWING (SEWAGE, DRAINAGE, IRRIGATION AND LIGHTING LINES, ETC.) ARE ESTIMATED VALUES ONLY.
  - CONTRACTOR IS RESPONSIBLE FOR DETECTING AND LOCATING ALL UNDERGROUND OBSTACLES WHETHER SHOWN ON THE DRAWINGS OR NOT
  - ALL CROSSINGS WORKS SHOULD BE DONE WITH THE PRESENCE OF THE CROSSED LINE OWNER/OPERATOR REPRESENTATIVES.
  - THE CONTRACTOR IS RESPONSIBLE FOR THE EXAMINATION OF THE DIMENSIONS AND THEIR VERIFICATION AT THE SITE. THE CONTRACTOR SHALL CHECK ALL THE DIMENSIONS AND IN THE EVENT OF AN ERROR OR INCONSISTENCY, SHALL INFORM THE SUPERVISOR.
  - THE CONTRACTOR IS RESPONSIBLE FOR DESIGNING, APPROVING AND PERFORMING OF TEMPORARY SUPPORTS DURING CONSTRUCTION FOR ALL ADJACENT OR CROSSING OTHER INFRASTRUCTURES.
  - MARKER POSTS / WARNING SIGNS WILL BE INSTALLED AT THE END OF EACH SERVICE LINE CONNECTION
  - CONNECTION LINE TIE-INS SHOULD BE DONE USING TAPPING SADDLE DETAIL. THE POSITION OF THE SERVICE LINE CONNECTIONS AND THEIR DIAMETER ARE SHOWN IN THE COORDINATES TABLE IN THE CURRENT DRAWING

### REFERENCES

NATURAL GAS DISTRIBUTION SYSTEM	SI 5664 PART 3					
GENERAL CONSTRUCTION STANDARDS	GGG-STD-CSE-0001					
TYPICAL SCHEMES OF LAYING THE GAS PIPELINE IN THE TRENCH	DAR-CSC-DSG-0101					
TYPICAL ROAD CROSS SECTION	DAR-CSC-CIV-0101 DAR-CSC-CIV-0102					
Rev.	Date	Description	Revision	BY	CHK	APPD

Design Company:

**BIM LEADERS LTD.**  
St. Nofar 32 Yavne 8120732 Israel

Client Company:

**NEGEV NATURAL GAS**  
7 Masada St. Besser Building 4 Bnei Brak, POB 47, 5126112  
Tel:03-5228508 Fax:03-5662521 Email:office@nevegasc.co.il

Title:

**NATURAL GAS DISTRIBUTION NETWORK**  
**ROVA 12 ARAD**  
**Plan & Longitudinal section - Gas Route on Road#1**

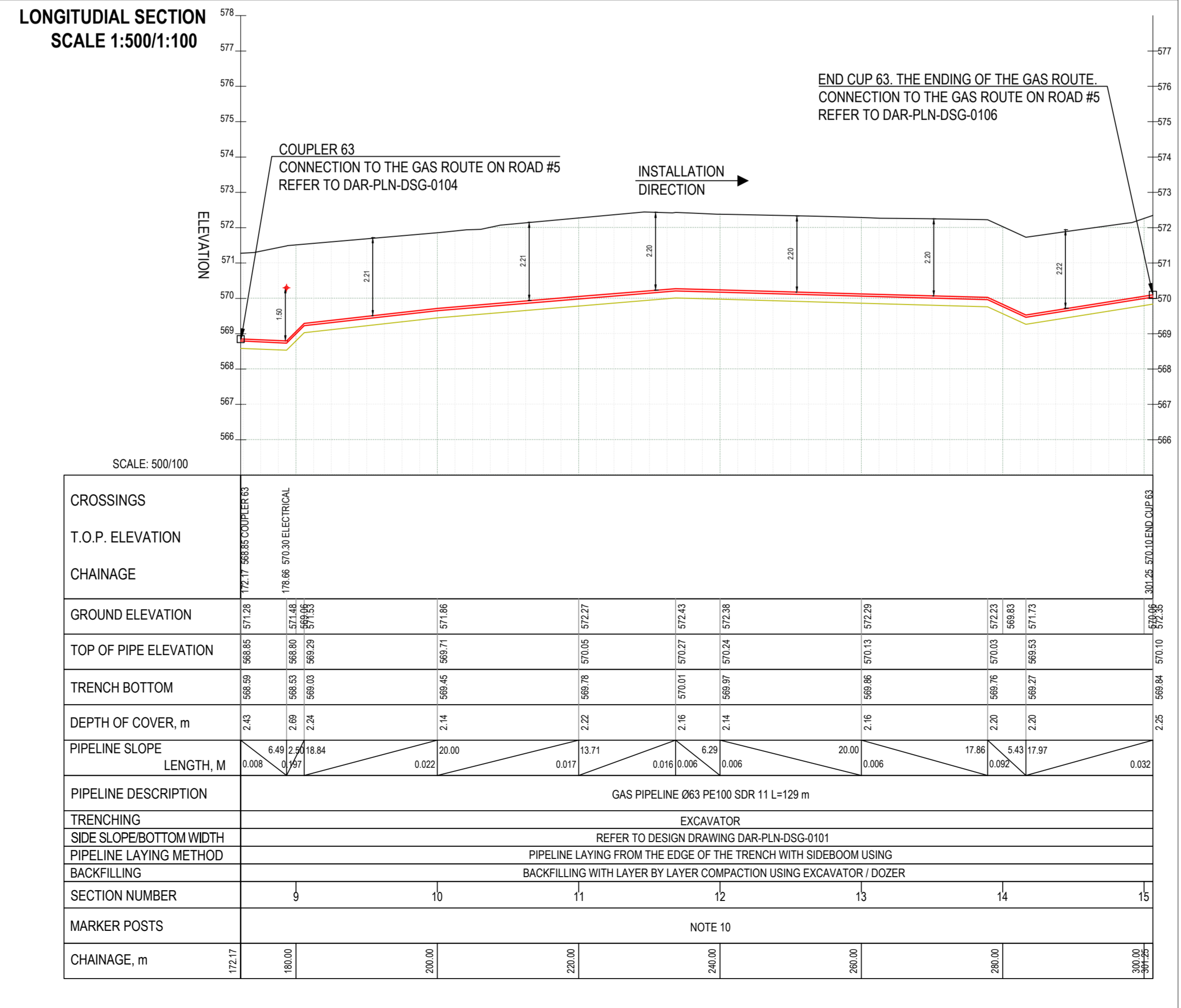
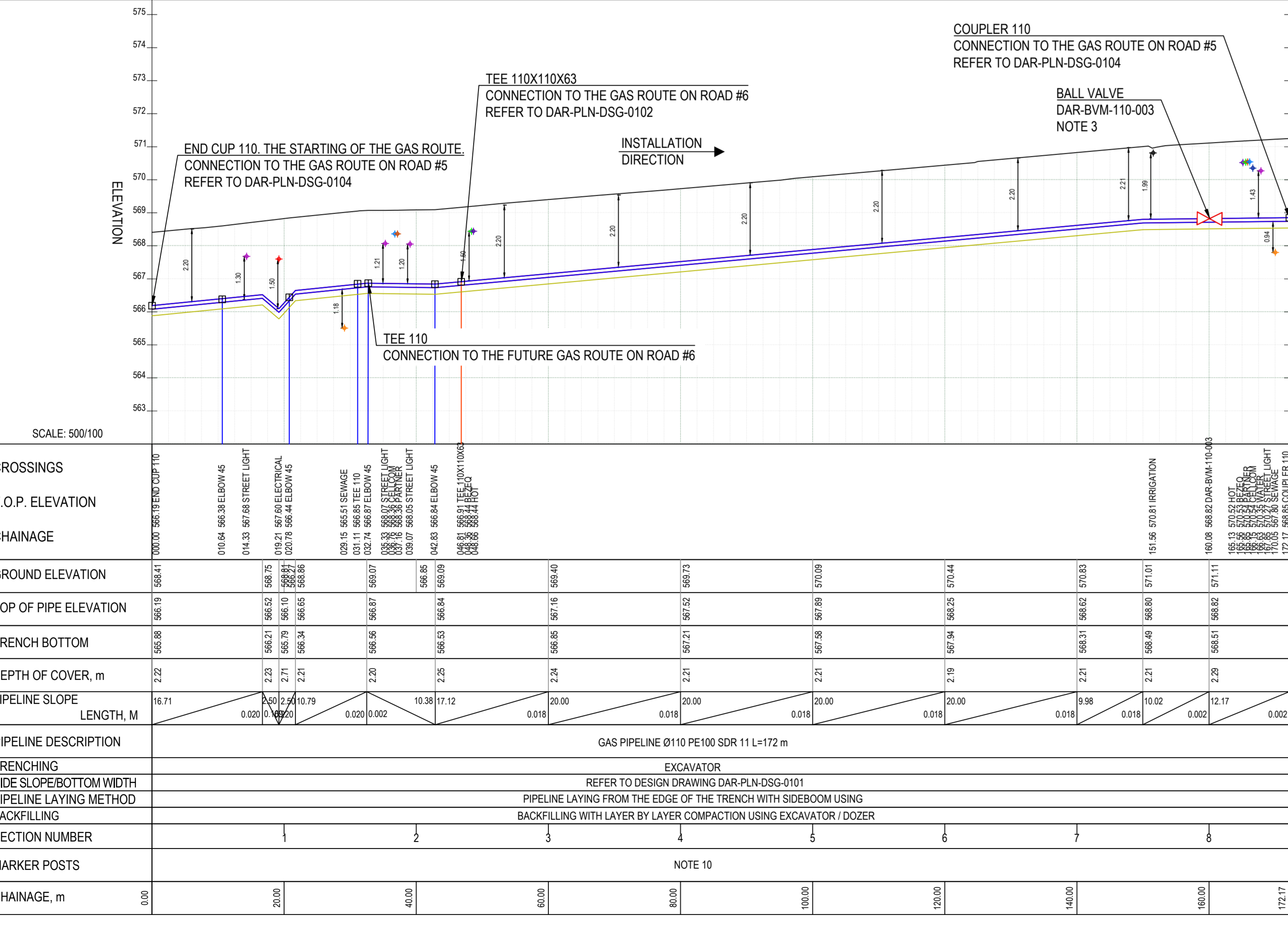
Region/Area: ROVA 12 ARAD

Proj. No.:

Drawing No. DAR-PLN-DSG-0103 Rev. P0

Scale: 1:500 Date: 22.06.2021

Design Company Approvals			Client Company Approvals		
Designed	Checked	Approved	Approved	Approved	Approved
Name: A. Bukatchuk	O. Safaniuk	T. Gotsulenko	K. Sigran	Y. Leyziel	
Sign:					
Date: 22.06.2021	22.06.2021	22.06.2021	22.06.2021	22.06.2021	22.06.2021



### SPECIFICATION OF MATERIALS AND PRODUCTS. BUILDING GAS PIPELINE ON THE ROADS

ITEM	DESCRIPTION	QUANTITY [M] OR [PIECES] ON ROAD	5% OF THE LENGTH OF THE PIPELINE (AT RESERVE)	OVERALL QUANTITY [M] OR [PIECES]
1	PIPE DN 110, PE100	172	6	178
2	PIPE DN 63, PE100	129	6	135
3	MARKER TAPE "GAS"	301	15	316
4	TRACER WIRE	301	15	316
5	BALL VALVE DN 110			1
6	ELBOW 45° DN 110, PE100			4
7	TEE DN 100, PE100			1
8	REDUCER TEE DN 110X63, PE100			1
9	COUPLER DN 110, PE100			3
10	COUPLER DN 63, PE100			1
11	END CUP DN 110, PE100			1
12	END CUP DN 63, PE100			1

\*SOME POSITIONS ARE IN LARGE NUMBERS BECAUSE THE CONSTRUCTION PHASE OF NEW GAS ROUTES IS NOT DEFINED.

### COORDINATES TABLE

No	EASTING	NORTHING	POINT EL.	DETAIL / DIA	NOTES
PIPELINE DETAILS COORDINATES TABLE					
1	218426.20	573601.45	566.19	END CUP / 110	MAINLINE
2	218434.94	573595.39	566.38	ELBOW 45 / 110	MAINLINE
3	218444.92	573597.18	566.44	ELBOW 45 / 110	MAINLINE
4	218453.41	573591.28	566.85	TEE / 110	MAINLINE
5	218454.74	573590.35	566.87	ELBOW 45 / 110	MAINLINE
6	218456.51	573580.42	566.84	ELBOW 45 / 110	MAINLINE
7	218459.78	573578.14	566.91	TEE / 110X110X63	MAINLINE
8	218567.51	573514.58	568.85	COUPLER / 110	MAINLINE
9	218557.77	573521.71	568.82	BALL VALVE / 110	MAINLINE DAR-BVM-110-003
10	218569.50	573517.03	568.85	COUPLER / 63	MAINLINE
11	218692.16	573479.68	570.10	END CUP / 63	MAINLINE